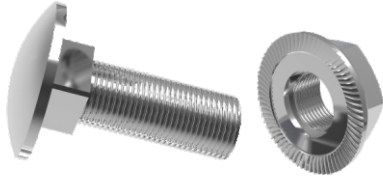
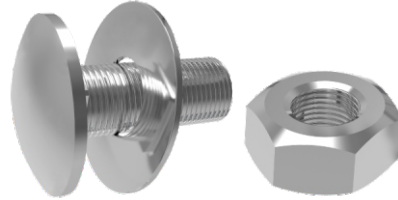


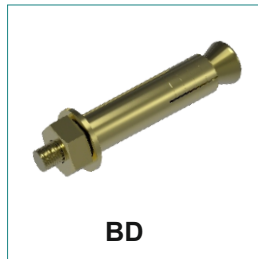
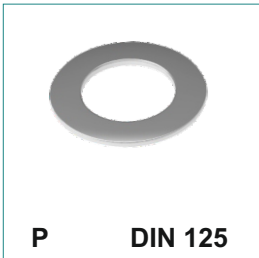
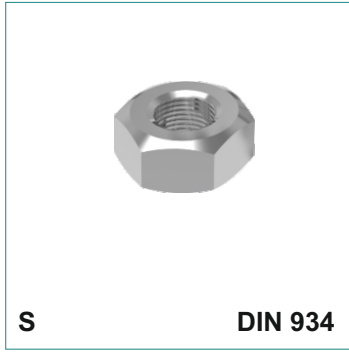
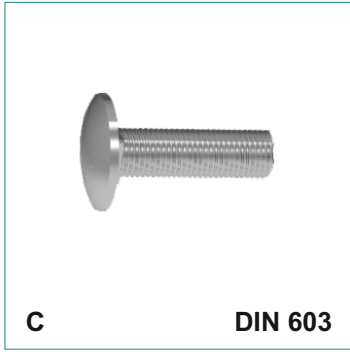
Mounting and fasteners



CFS



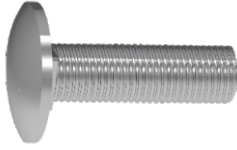
CSP



## Round Head Squire Neck Bolt

Yuvarlak Başlı Kare Boyunlu Kanal Cıvatası

Болты с грибовидной головкой и квадратным подголовником



Electro - Galvanised

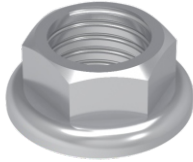
C M		EG		
CODE	Thread Metric	Length L mm	kg 1 pc	pcs
C M6 EG	M6	15	0,004	500
C M6 20 EG	M6	20	0,005	500
C M8 EG	M8	15	0,007	500
C M8 25 EG	M8	25	0,012	500

Dakromet

C M		HDG		
CODE	Thread Metric	Length L mm	kg 1 pc	pcs
C M6 HDG	M6	15	0,004	500
C M6 20 HDG	M6	20	0,005	500
C M8 HDG	M8	15	0,007	500
C M8 25 HDG	M8	25	0,013	500

## DIN 6923 Flanged Nut

DIN 6923 Flaşlı Somun - Гайка с насечкой



Electro - Galvanised

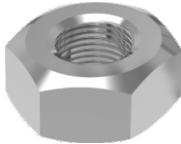
FS M		EG	
CODE	Thread Metric	kg 1 pc	pcs
FS M6 EG	M6	0,003	500
FS M8 EG	M8	0,006	500
FS M10 EG	M10	0,014	500
FS M12 EG	M12	0,030	500

Dakromet

FS M		HDG	
CODE	Thread Metric	kg 1 pc	pcs
FS M6 HDG	M6	0,003	500
FS M8 HDG	M8	0,006	500
FS M10 HDG	M10	0,015	500
FS M12 HDG	M12	0,032	500

## DIN 934 Hex Nut

DIN 934 Somun - Гайка



Electro - Galvanised

S M		EG	
CODE	Thread Metric	kg 1 pc	pcs
S M6 EG	M6	0,001	500
S M8 EG	M8	0,004	500
S M10 EG	M10	0,010	500
S M12 EG	M12	0,020	500

Dakromet

S M		EG	
CODE	Thread Metric	kg 1 pc	pcs
S M6 HDG	M6	0,002	500
S M8 HDG	M8	0,004	500
S M10 HDG	M10	0,011	500
S M12 HDG	M12	0,021	500

## DIN 125 Flat Washer

DIN 125 Pul - Шайба



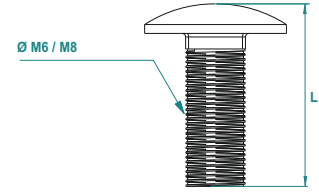
Electro - Galvanised

P M		EG	
CODE	Thread Metric	kg 1 pc	pcs
P M6 EG	M6	0,001	500
P M8 EG	M8	0,002	500
P M10 EG	M10	0,004	500
P M12 EG	M12	0,008	500

Dakromet

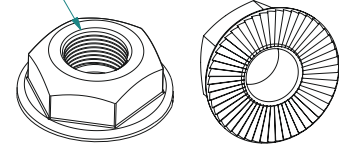
P M		EG	
CODE	Thread Metric	kg 1 pc	pcs
P M6 HDG	M6	0,001	500
P M8 HDG	M8	0,002	500
P M10 HDG	M10	0,004	500
P M12 HDG	M12	0,008	500

C M



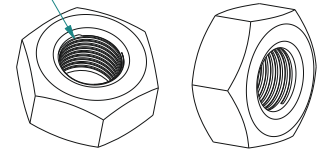
FS M

Ø M6 / M8 / M10 / M12



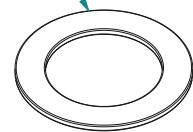
S M

Ø M6 / M8 / M10 / M12



P M

Ø M6 / M8 / M10 / M12



### MATERIAL & FINISH

EG- Electro - Galvanised EN ISO 2081

Dacromet - Non-electrolytical zinc-flake coatings EN ISO 10683

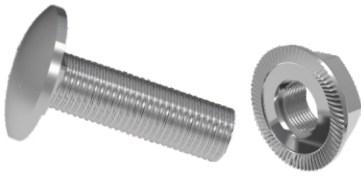
Available Finishes:

SS- Stainless steel AISI 304L and AISI 316L (SS)

## Round Head Squire Neck Bolt, Flanged Nut

Yuvarlak Başlıklı Kare Boyunlu Kanal Civatası ve Flaşlı Somun

Комплект: Болт с грибовидной головкой, и квадратным подголовником и Гайка с насечкой



Electro - Galvanised

CFS M		EG		
CODE	Thread Metric	Length L mm	KG 1 pc	pcs
CFS M6 EG	M6	15	0,007	500
CFS M6 20 EG	M6	20	0,008	500
CFS M8 EG	M8	15	0,013	500

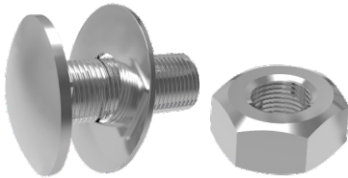
Dakromet

CFS M		HDG		
CODE	Thread Metric	Length L mm	KG 1 pc	pcs
CFS M6 HDG	M6	15	0,007	500
CFS M6 20 HDG	M6	20	0,008	500
CFS M8 HDG	M8	15	0,013	500

## Round Head Squire Neck Bolt, Hex Nut, Washer

Yuvarlak Başlı Kare Boyunlu Kanal Civatası, Somun ve Pul

Комплект: Болт с грибовидной головкой, и квадратным подголовником, Гайка и Шайба



Electro - Galvanised

CSP M		EG		
CODE	Thread Metric	Length L mm	KG 1 pc	pcs
CSP M6 EG	M6	15	0,007	500
CSP M8 EG	M8	15	0,013	500

Dakromet

CSP M		HDG		
CODE	Thread Metric	Length L mm	KG 1 pc	pcs
CSP M6 HDG	M6	15	0,007	500
CSP M8 HDG	M8	15	0,013	500

## DIN 127 Spring Lock Washers

DIN 127 Yaylı Pul - Шайба гровер



Electro - Galvanised

YP M		EG		
CODE	Thread Metric	KG 1 pc	pcs	
YP M6 EG	M6	0,001	500	
YP M8 EG	M8	0,002	500	
YP M10 EG	M10	0,004	500	
YP M12 EG	M12	0,008	500	

Dakromet

YP M		HDG		
CODE	Thread Metric	KG 1 pc	pcs	
YP M6 HDG	M6	0,001	500	
YP M8 HDG	M8	0,002	500	
YP M10 HDG	M10	0,004	500	
YP M12 HDG	M12	0,008	500	

## DIN 6798 Serrated Lock Washers

DIN 6798 Tırtıllı Pul - Шайба стопорная

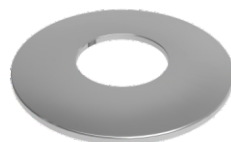


Electro - Galvanised

TP M		EG		
CODE	Thread Metric	KG 1 pc	pcs	
TP M6 EG	M6	0,001	500	
TP M8 EG	M8	0,002	500	
TP M10 EG	M10	0,004	500	
TP M12 EG	M12	0,008	500	

## DIN 9021 Wide Flat (Plain) Washers

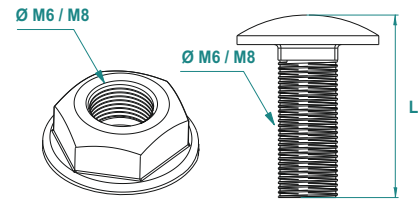
DIN 9021 Geniş Pul - Широкая шайба



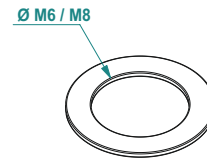
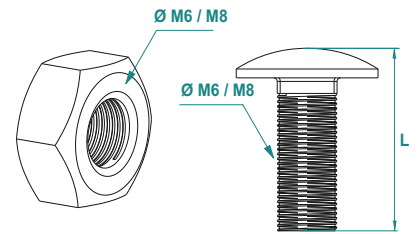
Electro - Galvanised

GP M		EG		
CODE	Thread Metric	D mm	KG 1 pc	pcs
GP M6 EG	M6	18	0,002	500
GP M8 EG	M8	24	0,004	500
GP M10 EG	M10	30	0,006	500
GP M12 EG	M12	37	0,012	500

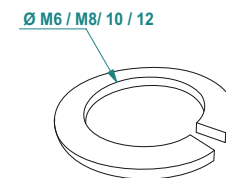
### CFS M6 / CFS M8



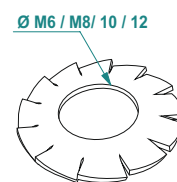
### CSP M



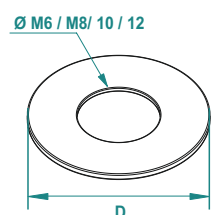
### YP M



### TP M



### GP M



### MATERIAL & FINISH

EG- Electro - Galvanised EN ISO 2083

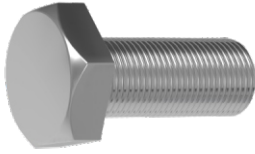
Dacromet - Non-electrolytical zinc-flake coatings EN ISO 10683

Available Finishes:

SS- Stainless steel AISI 304L and AISI 316L (ss)

## DIN 933 Hex Bolt

DIN 933 Anahtar Başlı Civata - Болт с шестигранной головкой



### Electro - Galvanised

AC M	M6	EG		
CODE	Thread Metric	Length L mm	kg 1 pc	pcs
AC M6 20 EG	M6	20	0,006	250
AC M6 25 EG	M6	25	0,007	250
AC M6 30 EG	M6	30	0,008	200
AC M6 35 EG	M6	35	0,009	200
AC M6 40 EG	M6	40	0,010	200

### Dakromet

AC M	M6	HDG		
CODE	Thread Metric	Length L mm	kg 1 pc	pcs
AC M6 20 HDG	M6	20	0,006	250
AC M6 25 HDG	M6	25	0,007	250
AC M6 30 HDG	M6	30	0,008	200
AC M6 35 HDG	M6	35	0,009	200
AC M6 40 HDG	M6	40	0,010	200

### M8

CODE	Thread Metric	Length L mm	kg 1 pc	pcs
AC M8 20 EG	M8	20	0,012	100
AC M8 25 EG	M8	25	0,013	100
AC M8 30 EG	M8	30	0,014	100
AC M8 35 EG	M8	35	0,016	100
AC M8 40 EG	M8	40	0,018	100
AC M8 50 EG	M8	50	0,021	100
AC M8 60 EG	M8	60	0,024	100
AC M8 70 EG	M8	70	0,027	100

### M8

CODE	Thread Metric	Length L mm	kg 1 pc	pcs
AC M8 20 HDG	M8	20	0,012	100
AC M8 25 HDG	M8	25	0,013	100
AC M8 30 HDG	M8	30	0,014	100
AC M8 35 HDG	M8	35	0,016	100
AC M8 40 HDG	M8	40	0,018	100
AC M8 50 HDG	M8	50	0,021	100
AC M8 60 HDG	M8	60	0,024	100
AC M8 70 HDG	M8	70	0,027	100

### M10

CODE	Thread Metric	Length L mm	kg 1 pc	pcs
AC M10 20 EG	M10	20	0,020	100
AC M10 25 EG	M10	25	0,023	100
AC M10 30 EG	M10	30	0,025	100
AC M10 35 EG	M10	35	0,028	100
AC M10 40 EG	M10	40	0,033	100
AC M10 50 EG	M10	50	0,038	100
AC M10 60 EG	M10	60	0,043	100
AC M10 70 EG	M10	70	0,048	100
AC M10 80 EG	M10	80	0,053	100
AC M10 90 EG	M10	90	0,058	100

### M10

CODE	Thread Metric	Length L mm	kg 1 pc	pcs
AC M10 20 HDG	M10	20	0,020	100
AC M10 25 HDG	M10	25	0,023	100
AC M10 30 HDG	M10	30	0,025	100
AC M10 35 HDG	M10	35	0,028	100
AC M10 40 HDG	M10	40	0,033	100
AC M10 50 HDG	M10	50	0,038	100
AC M10 60 HDG	M10	60	0,043	100
AC M10 70 HDG	M10	70	0,048	100
AC M10 80 HDG	M10	80	0,053	100
AC M10 90 HDG	M10	90	0,058	100

### M12

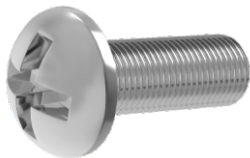
CODE	Thread Metric	Length L mm	kg 1 pc	pcs
AC M12 25 EG	M12	25	0,031	50
AC M12 30 EG	M12	30	0,035	50
AC M12 35 EG	M12	35	0,039	50
AC M12 40 EG	M12	40	0,043	50
AC M12 50 EG	M12	50	0,051	50
AC M12 60 EG	M12	60	0,060	50
AC M12 70 EG	M12	70	0,068	50
AC M12 80 EG	M12	80	0,076	50
AC M12 90 EG	M12	90	0,084	50

### M12

CODE	Thread Metric	Length L mm	kg 1 pc	pcs
AC M12 25 HDG	M12	25	0,031	50
AC M12 30 HDG	M12	30	0,035	50
AC M12 35 HDG	M12	35	0,039	50
AC M12 40 HDG	M12	40	0,043	50
AC M12 50 HDG	M12	50	0,051	50
AC M12 60 HDG	M12	60	0,060	50
AC M12 70 HDG	M12	70	0,068	50
AC M12 80 HDG	M12	80	0,076	50
AC M12 90 HDG	M12	90	0,084	50

## DIN 7985 Roofing Bolt

DIN 7985 Yıldız Silindir Başlı Civata (YSB)  
Винт с полукруглой головкой



### Electro - Galvanised

YSB M	EG			
CODE	Thread Metric	Length L mm	kg 1 pc	pcs
YSB M6 40 EG	M6	40	0,010	100
YSB M8 40 EG	M8	40	0,020	100
YSB M10 40 EG	M10	40	0,030	100

## DIN 94 Splinte Pins 8x80

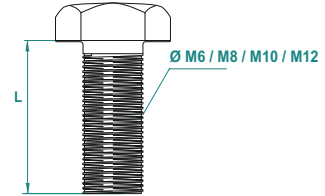
DIN 94 Kopyla 8x80  
Шпилька - фиксатор



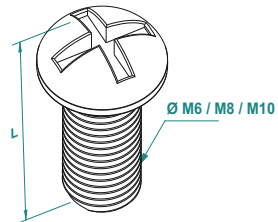
### Electro - Galvanised

KOP	EG			
CODE	Thread Metric	Length L mm	kg 1 pc	pcs
KOP M6	M6	70	0,014	100
KOP M8	M8	90	0,030	100

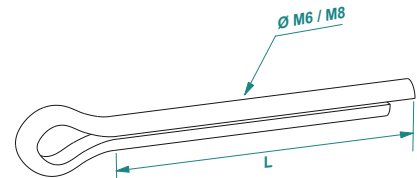
### AC M



### YSB M



### KOP



### MATERIAL & FINISH

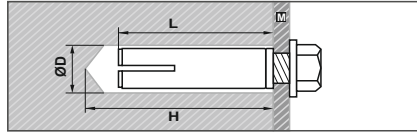
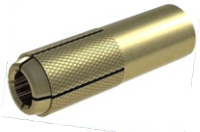
EG- Electro - Galvanised EN ISO 10683  
Dacromet - Non-electrolytical zinc-flake coatings EN ISO 10683

### Available Finishes:

SS- Stainless steel AISI 304L and AISI 316L (ss)

## Drop in Anchor

Çakmalı Dübel - Шпилька-фиксатор

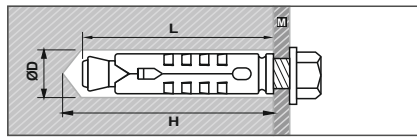


Electro - Galvanised

CD M		EG							
CODE	Thread Metric	Length L mm	Height H mm	Out Diameter D mm	Max Tensile Load kN	Tightening Torque Nm	kg	pcs	
CD M6	M6	20	20	7,4	1,00	5	0,006	100	
CD M8	M8	27	30	9,4	1,80	10	0,009	100	
CD M10	M10	40	40	11,6	3,70	20	0,016	50	
CD M12	M12	47	50	15,3	5,70	40	0,040	50	

## Draw in Anchor

S Tipi Çakmeli Dübel - Стандартный анкер

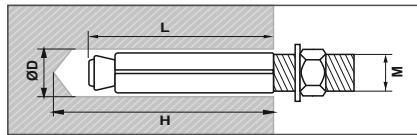
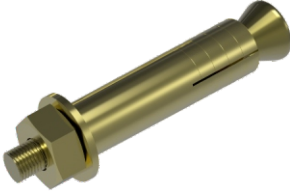


Electro - Galvanised

SD M		EG							
CODE	Thread Metric	Length L mm	Height H mm	Out Diameter D mm	Safe Tensile Load kN	Tightening Torque Nm	kg	pcs	
SD M6	M6	45	50	10	0,75	22	0,010	100	
SD M8	M8	50	60	12,5	3,50	60	0,014	100	
SD M10	M10	55	65	15,5	5,00	78	0,023	50	
SD M12	M12	65	75	18,5	7,50	115	0,040	50	

## Sleeve Anchor Pipe Type

Borulu Çakmeli Dübel - Анкер со шпилькой

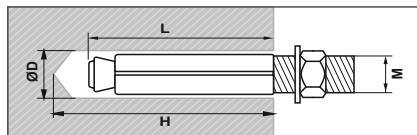


Electro - Galvanised

BD M		EG							
CODE	Thread Metric	Length L mm	Height H mm	Out Diameter D mm	Safe Tensile Load kN	Tightening Torque Nm	kg	pcs	
BD M8 60	M8	60	70	10	9,00	45	0,036	100	
BD M10 85	M10	85	90	12	9,00	45	0,065	100	
BD M10 110	M10	110	120	12	11,00	65	0,086	110	
BD M12 90	M12	90	100	16	11,00	65	0,110	100	
BD M12 110	M12	110	120	16	11,00	90	0,135	100	

## Sleeve Anchor

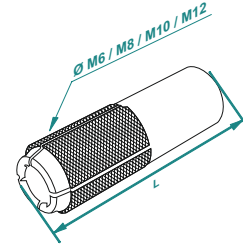
Gömleklİ Çakmeli Dübel - Стандартный анкер со шпилькой



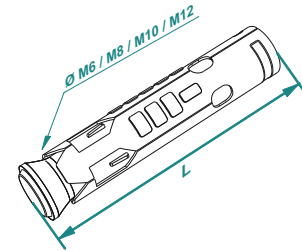
Electro - Galvanised

GD M		EG							
CODE	Thread Metric	Length L mm	Height H mm	Out Diameter D mm	Safe Tensile Load kN	Tightening Torque Nm	kg	pcs	
GD M6 45	M6	45	50	8	1,5	24	0,015	500	
GD M8 55	M8	55	60	10	2,0	28	0,028	250	
GD M8 75	M8	75	80	10	2,0	28	0,036	200	
GD M10 70	M10	70	75	12	3,1	65	0,055	100	
GD M10 85	M10	85	90	12	3,1	65	0,065	100	
GD M10 110	M10	110	120	12	3,1	65	0,086	100	
GD M12 90	M12	90	100	16	5,0	115	0,110	50	
GD M12 110	M12	110	120	16	5,0	115	0,135	50	

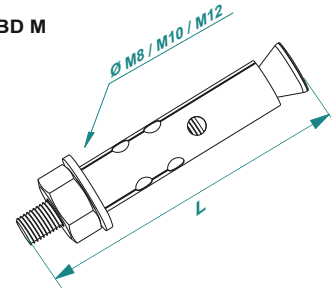
CD M



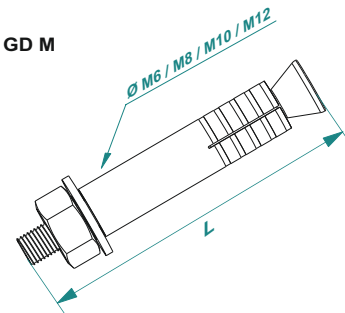
SD M



BD M



GD M



MATERIAL & FINISH

EG- Electro - Galvanised EN ISO 2081

Available Finishes:

SS- Stainless steel AISI 304L and AISI 316L (ss)